

## POROLUX 1000

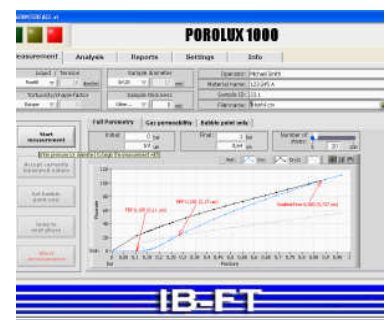
The Porolux 1000 is a non-destructive pore size analyzer for membranes, filters, and other media. The Porolux 1000 is a high spec porometer with excellent instrument reproducibility and unmatched ease-of-use.

The Porolux 1000 has state of the art PLC-technology, universal network connections and internet support and maintenance facilities.

The Porolux 1000 uses LabVIEW software, a commonly used graphical programming system for data acquisition and instrument control, and offers a very intuitive selection of all analysis parameters. The software also allows the use of multiple analysis algorithms.

The Porolux 1000 is mercury free allowing for the creation of an instrument that is very safe to operate without fear of contamination to the operator or contamination of the sample.

After-sales and application support is offered by a team of professionals with many years of experience in porometry.



## HISTORY

The Porolux 1000 is a joint development of Benelux Scientific, a scientific instruments company based in Belgium and IB-FT, a German engineering company. As a result of many years of experience in sales and support of porometers, Benelux Scientific has a true understanding of what customers expect from a porometer. IB-FT has a solid track record of engineering and manufacturing test equipment for the filter industry. Both partners have joined forces and have developed a high-spec porometer: the Porolux 1000.





## MEASURING PRINCIPLES

Capillary flow porometry, a liquid extrusion technique in which the differential gas pressure and flow rates through wet and dry samples are measured.

## SPECIFICATIONS

Measurements	Bubble point, maximum pore size, mean flow pore size, minimum pore size; complete pore size distribution, pore number distribution, permeability
Pore Size Range	Measurable pore size range from 14 nm to 300 $\mu\text{m}$ equivalent diameter
Pressure Range	0-35 bar with flow rates of up to 200 liters per minute
Flow Rate	Up to 200 liters per minute
Sample Holders	25 mm diameter
Software	LabView, easy data export to Excel
Hardware	Standard PC, universal network connections
Power Supply	110 – 240 VAC

## APPLICABLE STANDARDS

- ASTM E 1294-89 (1999)
- ASTM F316-03
- BS 3321:1986
- ISO 2942:2004

## CONTACT INFORMATION

Benelux Scientific  
Begoniastraat 17  
9810 Eke  
Belgium

T +32 9 25 25 400  
F +32 9 25 22 393  
E [info@porometer.com](mailto:info@porometer.com)  
W [www.porometer.com](http://www.porometer.com)

