



## QMAT Materials Testing and Analysis Software





# QMat Professional

## Perform A Test

Once the test method is chosen or designed, the next action is to perform the test:

- **Test Zone** — Provides the flexible environment where tests are performed, results calculated and Pass/Fail conditions are automatically signaled according to user defined requirements. Additional features include post-test analysis and output of traceable reports.

## Analyze The Data

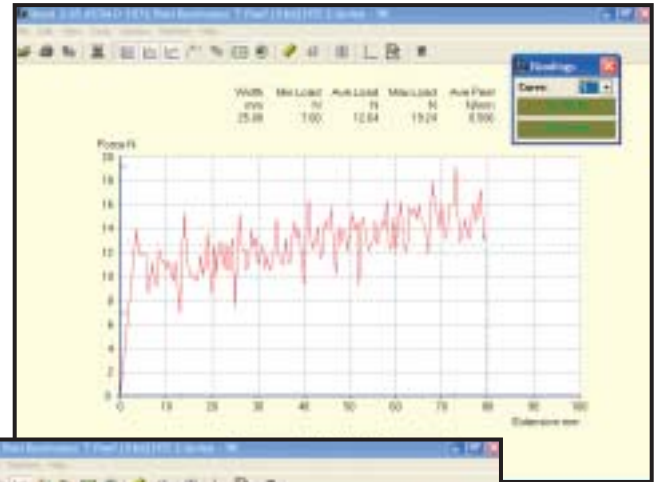
Once the data has been acquired, it is extremely useful to make historical comparisons, look for new results on old data, or simply establish the existence of a trend:

- **File Examination** — Gives a versatile historical review of test results allowing analysis over one one day or ten years. Performs comprehensive statistical analysis and generates a variety of performance trend charts.
- **Batch Editor** — Allows easy review and editing of product, batch, and materials reference.

## Other Important Features:

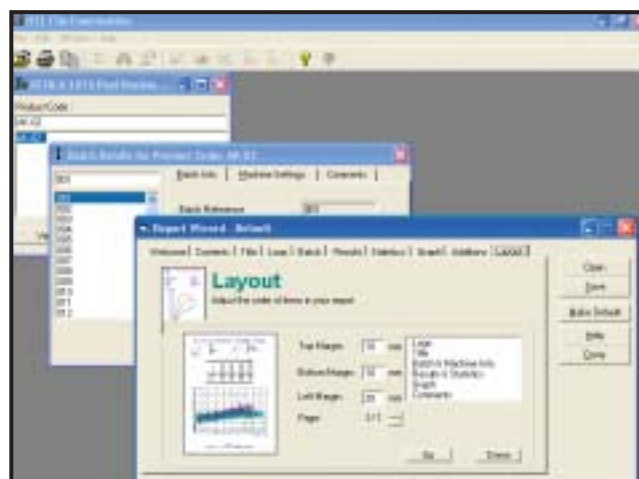
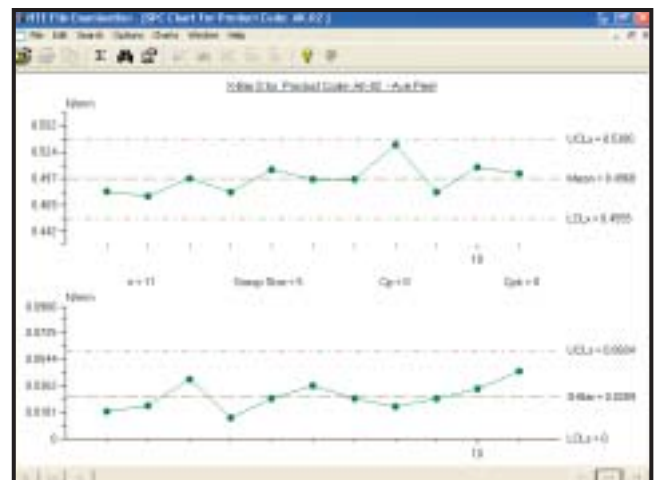
- **Password Protection** — Gives multiple users, with independent levels of security, access to the test data and test control.
- **Database Manager** — Allows users with the correct security level to rename tests or delete individual results.
- **Translator** — Gives operators a choice of language in which the package operates. Choose from English, French, German, Italian, Spanish, Greek, Korean, Turkish, Russian, Portuguese, Simplified Chinese, or Polish as standard options. The program can be defined by operators so that any local terminology can also be used.

Screen 5. In Test Zone, the graph of the test is shown in real time.



Screen 6. Once the test is complete, the resulting graph can be enlarged for closer scrutiny.

Screen 7. Under File Examination, process control, regression, and histogram charts can be generated.



Screen 8. Under File Examination, test reports can be formatted for internal use, customers, and associates. Select the information on the report, graph set-up and presentation, import logos, configure margins, etc., and then print or email immediately.

# QMat Professional

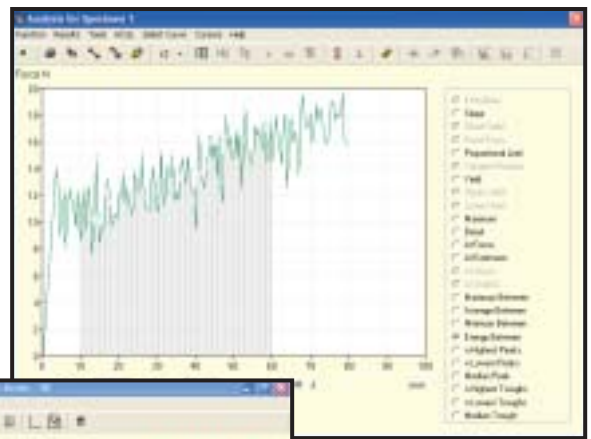
## QMat Professional Recommended Minimum System:

- Pentium P500 MHz or better (or equivalent alternative, i.e. AMD K6/2-500)
- 64 Mb RAM (128 MB for Windows NT/2000/XP)
- Minimum of 100 MB free hard disk space for installation
- CD-ROM drive.
- 17 SVGA monitor in 16-bit color at 1024 x 768
- 2 Serial COMS ports, BUS mouse
- Additional disk space required for test data storage

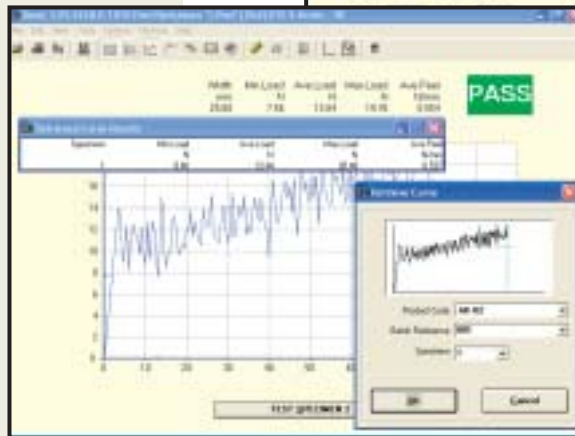
## Operating Systems:

Microsoft Windows™ 98 / 2000 / NT / ME / XP

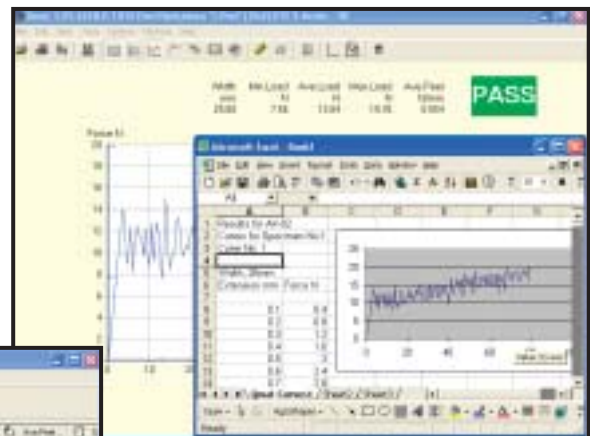
**Notes:** 1. Serial ports and the Mouse: In order to control the S-Series Tensile Testing machine, QMat S-Series software requires either Com1 or Com2 to be available with a 9-way connector for the cable. Should you also require a Tinius Olsen H500L LASER extensometer, then you MUST have both serial ports free. This means that due to Windows serial port assignments your PC must be fitted with a PS/2 Bus mouse instead of a serial mouse. Additional serial devices can be used, e.g. Sylvac thickness gauge or a balance. However, QMat: Testzone requires that these devices be connected either via Com3 or Com4. 2. Microsoft Windows NT 4.0 or Windows 2000: Only the January 2000 release 2.10 or later of QMat will work with this. ALL prior releases were 16/32-bit for Windows 3.x compatibility.



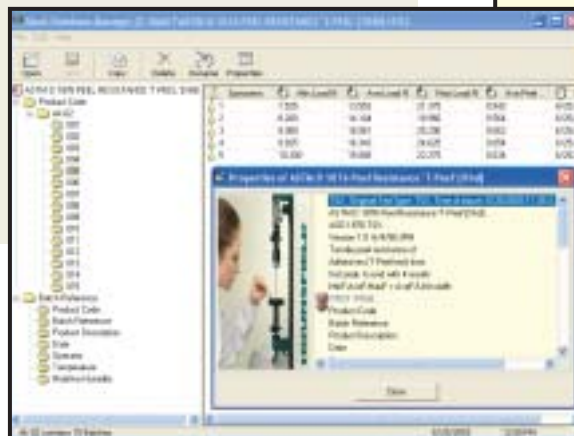
**Screen 9.** Post test analysis. Interrogate curve and calculate additional results. Correct toe-in and break point on curves.



**Screen 10.** Retrieve historical test curves and compare with the current result.



**Screen 11.** Export curve data directly to Excel or other general laboratory management packages.



**Screen 12.** Use the database manager to edit results, purge and compact database, view test method coding, check results calculation for reference and traceability.

**Tinius Olsen**

## World Headquarters:

1065 Easton Road  
 Horsham, PA 19044 USA  
 (215) 675-7100  
 Fax (215) 441-0899  
[www.TiniusOlsen.com](http://www.TiniusOlsen.com)  
[info@TiniusOlsen.com](mailto:info@TiniusOlsen.com)

## European Headquarters:

6 Perrywood Business Park  
 Honeycrock Lane, Salfords  
 Redhill, Surrey RH1 5DZ England  
 +44 (0) 1737 765001  
 Fax +44 (0) 1737 764768

Contact Your Local Representative: