

# Insights... Fast

## STA 6000 Simultaneous Thermal Analyzer



The STA 6000 simultaneous thermal analyzer offers performance, reliability and productivity you can depend on.

Designed with routine and research applications in mind, the STA 6000 simultaneous thermal analyzer applies advanced innovative sensor technology to yield higher accuracy and quality results. The patent pending SaTurnA™ sensor and proven compact furnace allows for better temperature control, more consistent measurements and the fastest cool-down time.

If increasing productivity is your goal, the STA 6000 with its easy-to-load vertical system can be equipped with an optional autosampler that can run an industry leading 45 samples unattended.

- Compact furnace allows better temperature control which leads to more reliable results
- Start experiments as low as 15 °C to capture complete moisture and solvent evaporation
- Integrated mass flow gas control and switching for accurate environmental control
- Fastest cool down time for high productivity
- A fully integrated 45 position autosampler option for unattended operation
- Small footprint for optimal use of your laboratory space
- Operates under powerful Pyris™ software control with 21 CFR 11 option

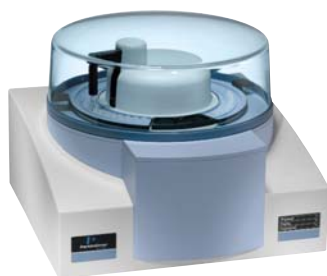


### SaTurnA Sensor



The STA 6000 applies the innovative patent pending SaTurnA sensor for high quality simultaneous TG and DTA/DSC measurements. It combines the sample pan holder and a platinum reference ring which is designed to match the thermal characteristics of the sample pan while also serving as the reference temperature thermocouple. The advanced sensor is optimized to achieve flat DTA baselines and an excellent sensitivity. Both sample and reference temperature are directly measured for best analytical performance. The pan support and reference ring is made of pure platinum which is corrosive resistant for a wide variety of applications

- Simultaneous analysis of TG with DTA mode ( $\Delta T$ ) and DSC (mW) mode for fast enhanced result interpretation
- Innovative patent pending SaTurnA sensor to measure both sample and reference temperature directly for superb performance



## Specifications

<b>Furnace type</b>	Top loading	Easy loading and unloading in manual and automated mode. Small footprint allows for the best use of your laboratory space
<b>Temperature range</b>	15 °C to 1000 °C	Start experiments below room temperature to capture complete moisture and solvent evaporation
<b>Temperature calibration</b>	Metal standards	
<b>Heating rate ambient to 1000 °C</b>	0.1 to 100 °C /min	
<b>Thermocouples</b>	PT-PT/Rh 13% (Type R)	
<b>Furnace cooling</b>	Forced air and chiller	Fastest cool down for higher productivity
<b>Sample capacity</b>	1500 mg	
<b>Balance design</b>	Single Beam vertical, user exchangeable SaTurnA sensor	Optimized for performance, reliability and productivity
<b>Balance sensitivity</b>	0.1 ug	
<b>Calorimetric accuracy/precision</b>	+/- 2% based on metal standards	
<b>Mass flow control and switch</b>	Integrated	Mass flow gas control and switching for accurate environmental control and high precision analysis
<b>Sample pans</b>	Alumina 180 ul	
<b>Temperature accuracy</b>	< +/-0.5 °C	
<b>Temperature reproducibility</b>	< +/-0.5 °C	
<b>Cooling rate</b> 1000 °C to 100 °C 1000 °C to 30 °C	under 12 min under 20 min	Fastest cool down for higher productivity
<b>Autosampler</b>	Optional, 45 positions	Run more samples unattended allowing for maximum reproducibility and productivity

The data presented in this data sheet are not guaranteed. Actual performance and results are dependent upon the exact methodology used and laboratory conditions. This data should only be used to demonstrate the applicability of an instrument for a particular analysis and is not intended to serve as a guarantee of performance.

PerkinElmer, Inc.  
940 Winter Street  
Waltham, MA 02451 USA  
Phone: (800) 762-4000 or  
(+1) 203-925-4602  
[www.perkinelmer.com](http://www.perkinelmer.com)



For a complete listing of our global offices, visit [www.perkinelmer.com/lasoffices](http://www.perkinelmer.com/lasoffices)

©2007 PerkinElmer, Inc. All rights reserved. The PerkinElmer logo and design are registered trademarks of PerkinElmer, Inc. SaTurnA and Pyris are trademarks of PerkinElmer, Inc. or its subsidiaries, in the United States and other countries. All other trademarks not owned by PerkinElmer, Inc. or its subsidiaries that are depicted herein are the property of their respective owners. PerkinElmer reserves the right to change this document at any time and disclaims liability for editorial, pictorial or typographical errors.